

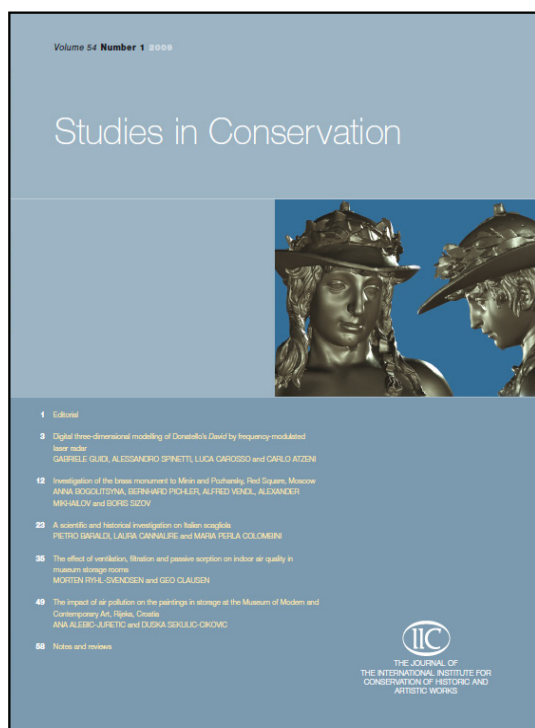
Library Recommendation Form

Please forward this to your Serials Librarian/Library Acquisition Committee

Dear Serials Librarian/Information Specialist,

Please include the following journal in your next serials review meeting, with my recommendation to subscribe to the following Earthscan journal:

Studies in Conservation



The Journal of the International Institute for Conservation of Historic and Artistic Works (IIC)

Founded in 1952, *Studies in Conservation* is the premier international journal in its field, earning a reputation for being the most authoritative and widely referenced source, presenting original, peer-reviewed papers featuring the latest advances, techniques and practice in conservation and restoration from around the world.

The scope of the journal is as broad as the field itself, covering the conservation of materials, artefacts, objects and works of art, to architecture and historic structures. Each paper includes a summary in English, French, German and Spanish.

Editor-in-Chief: Professor Alan Phenix,
Getty Conservation Institute, Los Angeles, USA
www.earthscan.co.uk/journals/SINC
 ISSN: 0039-3630
 Frequency: 4 issues per year

I recommend the journal for the following reasons:

- REFERENCE:** This journal is directly related to my field and is an important source of reference for my research. I need to refer to articles from this journal frequently in the course of my work.
- STUDENT REFERRAL:** It is critical that students have access to this information to best facilitate their course work and academic pursuits. I will be referring my students to this journal regularly.
- BENEFIT FOR LIBRARY:** This journal will be a valuable addition to the library's collection of scientific resources. Its acquisition will assist the library in fulfilling departmental, faculty and student needs.
- OWN AFFILIATION:** I am a member of the editorial/advisory board and strongly support Earthscan's journals as an essential resource. I regularly recommend articles to students and colleagues.

Additional reason(s):

.....

Name: Position:

Institution/Organisation:

Department:.....

Email:.....